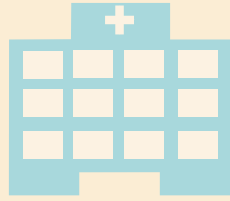


# Hospital Outbreaks and Provision of Support to Boards

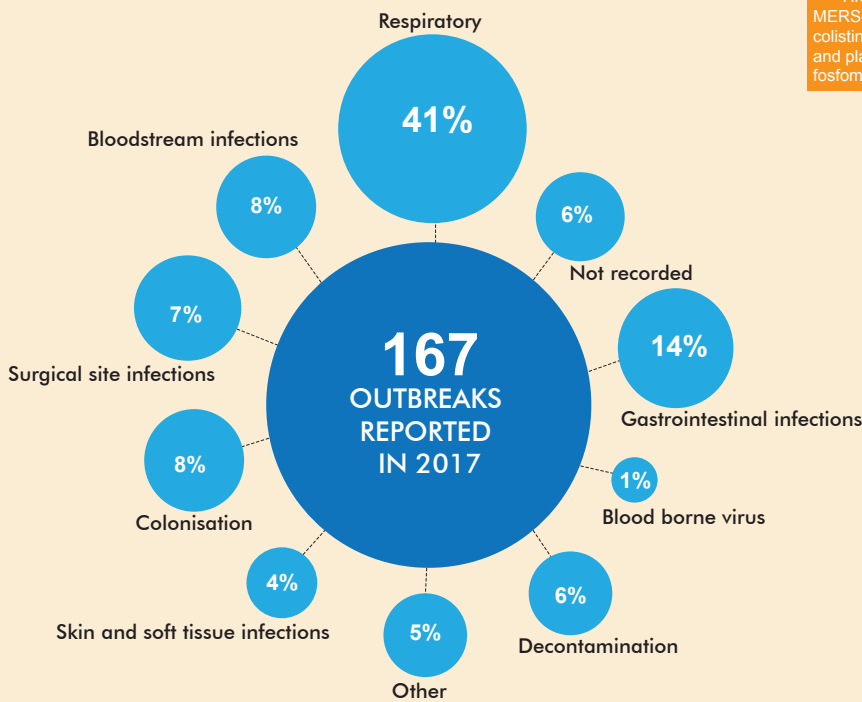


**HOSPITAL OUTBREAKS** ARE REPORTED TO HPS FOR EXPERT ADVICE AND/OR AS PART OF THE HOSPITAL INFECTION INCIDENCE ASSESSMENT TOOL (HIIAT) REPORTING SYSTEM. FROM 1 APRIL 2016 ALL NHS BOARDS WERE REQUIRED TO REPORT ALL HIIAT GREEN (NON-NOROVIRUS) OUTBREAKS AND INCIDENTS.

NUMBER OF OUTBREAKS AND INCIDENTS REPORTED AS EITHER RED, AMBER OR GREEN IN 2017.

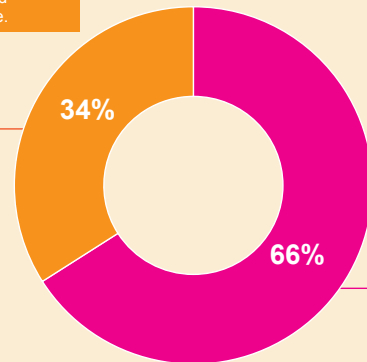


## TYPES OF HEALTHCARE OUTBREAKS AND INCIDENTS



## CURRENT AND EMERGING THREATS REPORT

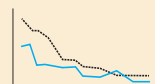
**HIGH RISK THREATS**  
MERS-CoV, plasmid-mediated colistin resistance and plasmid-mediated fosfomycin resistance.



**MODERATE RISK THREATS**  
*Candida auris*, *Mycobacterium chimaera*, carbapenem resistant *Acinetobacter baumannii*, *Salmonella typhi* resistant to 3rd generation cephalosporins and seasonal respiratory illness with increased clinical impact (influenza).

IT IS ESSENTIAL THAT LESSONS ARE LEARNED FROM OUTBREAKS THAT HAPPEN. SHARING THE LESSONS LEARNED THROUGHOUT NHSSCOTLAND IS CENTRAL TO ATTAINING EFFECTIVE PREVENTION.

## QUALITY IMPROVEMENT AND INTERVENTIONS TO CONTAIN **HEALTHCARE OUTBREAKS**



- PREVENTION THROUGH SHARED INTELLIGENCE
- PREPAREDNESS THROUGH PROVISION OF TOOLS READY TO USE IN OUTBREAKS
- DETECTION THROUGH UPDATES TO GUIDANCE ON LOCAL SURVEILLANCE
- MANAGEMENT THROUGH TOOLS AND GUIDANCE PRODUCED TO AID IN MANAGEMENT OF OUTBREAKS