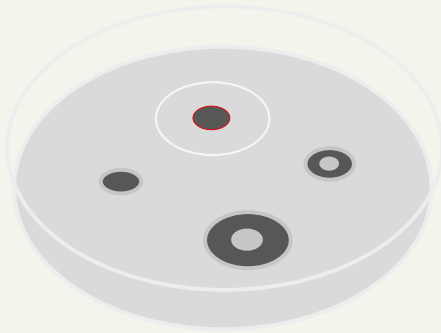


Carbapenemase-producing Bacteria



MULTIDRUG RESISTANCE AMONG GRAM-NEGATIVE BACTERIA HAS BEEN INCREASINGLY REPORTED IN THE LAST TEN YEARS. THE EMERGENCE OF **CARBAPENEMASE-PRODUCING BACTERIA** IS OF PARTICULAR CONCERN AS IT LEAVES VERY FEW THERAPEUTIC OPTIONS FOR INFECTIONS WITH THESE TYPES OF BACTERIA.

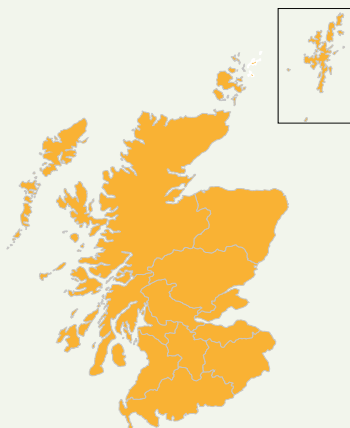
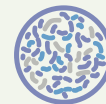
26 | CARBAPENEMASE-PRODUCING GRAM-NEGATIVE ORGANISMS IDENTIFIED IN SCOTLAND IN 2014, WHICH IS THE AT THE SAME LEVEL AS 2013.



1 | *KLEBSIELLA PNEUMONIAE* CARBAPENEMASE-PRODUCING CLONE OF *K. PNEUMONIAE* ST258 IDENTIFIED.

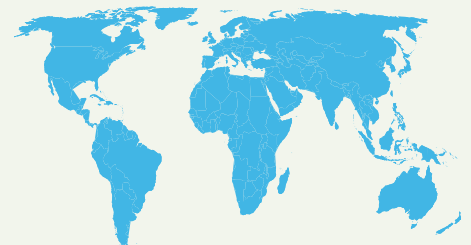


8 | NEW-DEHLI METALLO-BETA-LACTAMASES IDENTIFIED. THE OCCURRENCE OF THESE ISOLATES IN THE COMMUNITY IS A CONCERN.



2 INCIDENTS OF LOCAL SPREAD OF **CARBAPENEMASE-PRODUCING BACTERIA** MEANS THAT SCOTLAND IS NOW BEING REPORTED AS A COUNTRY WITH 'REGIONAL SPREAD'.

CARBAPENEMASE-PRODUCING BACTERIA HAVE BEEN REPORTED WORLDWIDE. INCREASING INTERCONTINENTAL TRAVEL HAS CONTRIBUTED TO THEIR SPREAD.



2.2% | INCREASE IN THE USE OF CARBAPENEMS BETWEEN 2012 AND 2013. THIS CONTINUES THE UPWARD TREND OBSERVED IN PREVIOUS YEARS.

IT IS CRITICAL TO PRESERVE THE USE OF THESE ANTIBIOTICS DUE TO LACK OF NEW ANTIBACTERIALS UNDER DEVELOPMENT.



INTERVENTIONS AND QUALITY IMPROVEMENT TO CONTAIN **CARBAPENEMASE-PRODUCING BACTERIA**



- REVIEW OF GUIDANCE
- SCOTTISH ANTIMICROBIAL PRESCRIBING GROUP (SAPG) GUIDANCE WITH RECOMMENDATIONS FOR EMPIRICAL AND TARGETED USE OF CARBAPENEMS
- RAPID IDENTIFICATION THROUGH SCREENING (TWO-STEP CLINICAL RISK ASSESSMENT)
- SURVEILLANCE