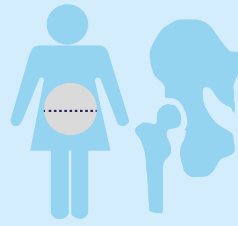


# Surgical Site Infection



SSI IS ONE OF THE MOST COMMON HAIs, ESTIMATED TO ACCOUNT FOR 18.6% OF INPATIENT HAI WITHIN NHSSCOTLAND. SSIs CAN CAUSE EXCESS MORBIDITY AND MORTALITY AND CAN DOUBLE THE COST OF TREATMENT, MAINLY DUE TO AN INCREASE IN THE LENGTH OF STAY IN HOSPITAL.

## CAESAREAN SECTION

**259** SSI FOLLOWING C-SECTION IN 2016

**17175** PROCEDURES

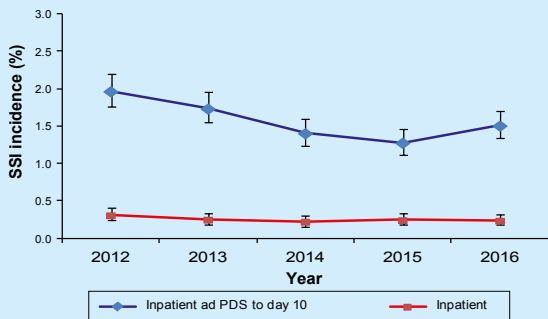
**84.2%** SSI DIAGNOSED FOLLOWING DISCHARGE FROM HOSPITAL USING PDS

**0.24%** INCIDENCE OF INPATIENT SSI

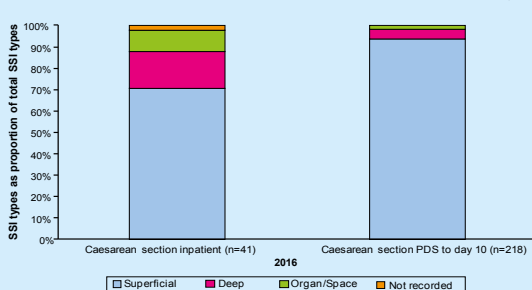
**1.51%** OVERALL INCIDENCE FOR INPATIENT AND PDS TO DAY 10

**2015 to 2016** NO CHANGE IN THE INCIDENCE OF INPATIENT AND PDS TO DAY 10 SSI

INCIDENCE OF SSI FOLLOWING C SECTION, 2012 TO 2016



PROPORTION OF SSI FOLLOWING C-SECTION BY SSI TYPE, 2016



## HIP ARTHROPLASTY

**53** SSI FOLLOWING HIP ARTHROPLASTY IN 2016

**8870** PROCEDURES

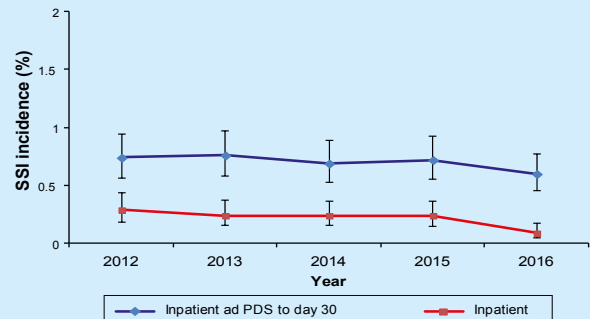
**84.9%** SSI REPORTED ON READMISSION

**0.09%** INCIDENCE OF INPATIENT SSI

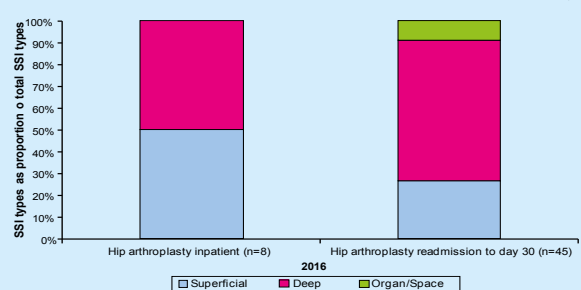
**0.60%** OVERALL INCIDENCE FOR INPATIENT AND READMISSION TO DAY 30

**2015 to 2016** SIGNIFICANT DECREASE IN THE INPATIENT INCIDENCE OF SSI FOLLOWING HIP ARTHROPLASTY

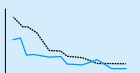
INCIDENCE OF SSI FOLLOWING HIP ARTHROPLASTY, 2012 TO 2016



PROPORTION OF SSI FOLLOWING HIP ARTHROPLASTY BY SSI TYPE, 2016



## QUALITY IMPROVEMENT AND INTERVENTIONS TO REDUCE SSI



- COLLABORATIVE WORKING
- ACTION PLANS TO REDUCE SSI
- DEVELOPMENT OF NEW REPORTING PROCEDURE
- PROTOCOL TO INCLUDE NEW MANDATORY PROCEDURES
- NEW PROTOCOL AVAILABLE AT: <http://www.hps.scot.nhs.uk/pubs/detail.aspx?id=827>