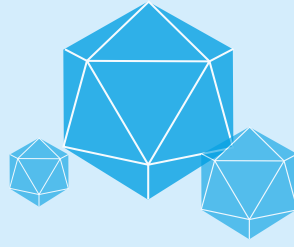


# Norovirus Outbreaks

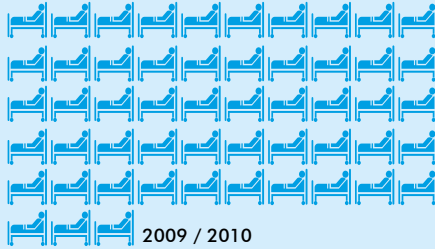


**NOROVIRUS** SPREADS VERY EASILY AND THERE IS A RISK OF OUTBREAKS IN ANY PLACE WHERE THERE ARE SHARED LIVING SPACES SUCH AS IN HOSPITALS.

THIS MAY LEAD TO CLOSURE OF A BAY OR A WHOLE WARD WITHIN THE HOSPITAL, WITH SUBSEQUENT INCONVENIENCE AND SUFFERING TO PATIENTS.

## PEAK WARD CLOSURES

53



26



22



25



8



11

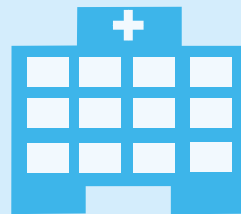


8



**8** WAS THE PEAK NUMBER OF WARD CLOSURES IN THE 2015-16 SEASON DUE TO PRESUMED OR CONFIRMED **NOROVIRUS**.

FOR SEASON 2015-2016 THE NUMBER OF WARD CLOSURES IS DOWN FROM LAST YEAR. THIS MAY BE THE RESULT OF THE PREPAREDNESS AND RESPONSE ACTIVITY IN NHS BOARDS, BUT UNDOUBTEDLY SOME WILL BE DUE TO THE VIRULENCE AND COMMUNICABILITY OF THE CIRCULATING VIRUS.



**Norovirus vomit can travel up to 3 metres.**

**Don't spread it. If you get ill, stay at home.**

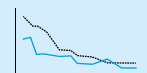
#NoToNorovirus [www.nhsinform.co.uk/norovirus](http://www.nhsinform.co.uk/norovirus)



TO HELP REDUCE THE BURDEN OF **NOROVIRUS**, THE 'STAY AT HOME CAMPAIGN' CONTINUED IN 2016 IN PREPARATION FOR THE **NOROVIRUS** SEASON.

THE SUCCESSFUL RADIO SOUND BITES PRODUCED IN 2015 BY NHS DUMFRIES AND GALLOWAY WERE RE-ISSUED AND HPS PRODUCED 'GENERAL INFORMATION TO PREPARE FOR AND MANAGE NOROVIRUS IN CARE SETTINGS' REPLACING GUIDELINES FOR HEALTHCARE SETTINGS AND CARE HOME SETTING.

## QUALITY IMPROVEMENT AND INTERVENTIONS TO CONTROL **NOROVIRUS**



- MONITORING
- ENGAGEMENT WITH BOARDS AND HEALTH SCOTLAND TO CO-ORDINATE CAMPAIGN
- GUIDANCE
- TOOLKIT